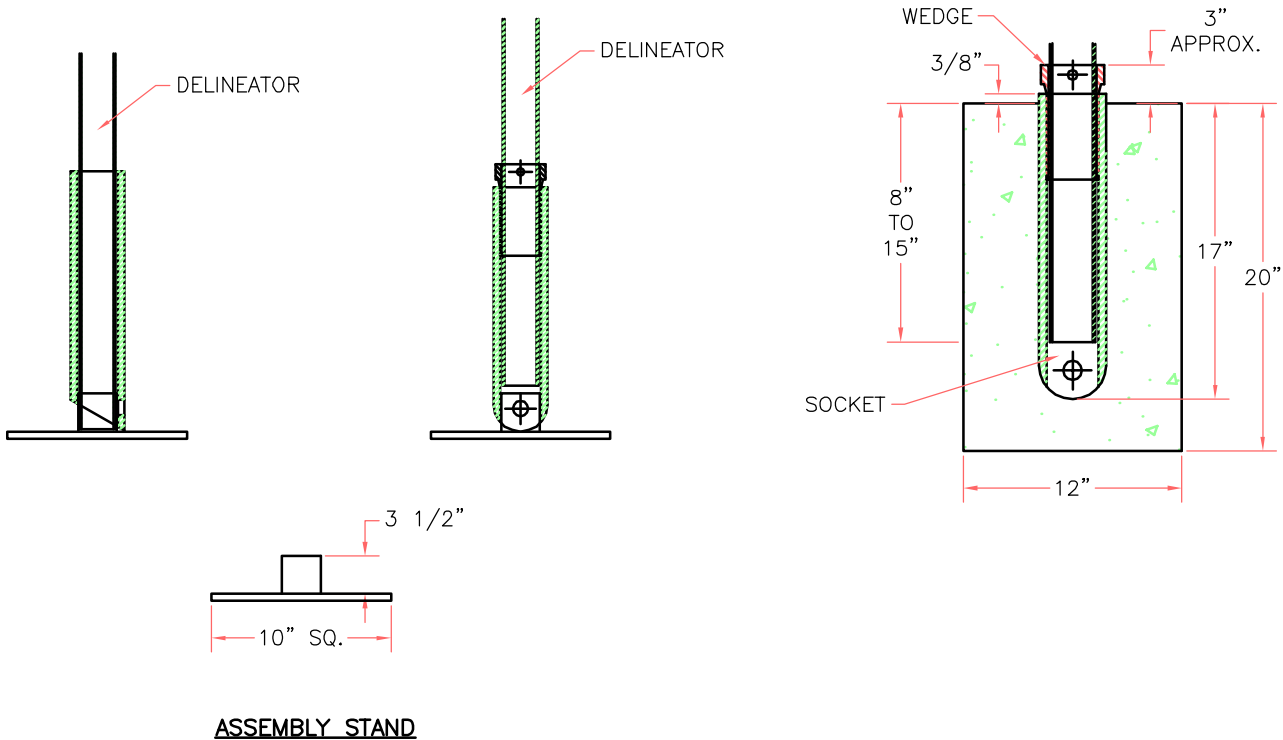


SHUR-TITE® SOCKET SYSTEM INSTALLATION INSTRUCTIONS FOR DELINEATORS

1. DIG HOLE 12" DIAMETER BY 20" DEEP.
2. PLACE SHUR-TITE SOCKET ON UPRIGHT ASSEMBLY STAND STEM. FLAT END OF SOCKET ON TOP. INSERT DELINEATOR POST INTO SOCKET (THE UPRIGHT STEM SUPPORTS THE POST ABOVE THE LOCKING PORT ON THE BOTTOM OF SOCKET THROUGH WHICH CONCRETE FLOWS AND "LOCKS" IT INTO THE FOOTING.) POSITION SHUR-TITE WEDGE BETWEEN SOCKET AND DELINEATOR, MAKING SURE ONE FLAT OF POST IS ON SAME SIDE AS THE WEDGE. DRIVE WEDGE DOWN UNTIL APPROXIMATELY 3/8" ABOVE TOP OF SOCKET WITH SHUR-TITE DRIVER. THE THREE COMPONENT DELINEATOR UNIT IS READY FOR INSTALLATION.
3. MIX AND POUR CONCRETE UP TO APPROXIMATELY 10" FROM TOP OF HOLE.
NOTE: CONCRETE SHOULD BE 3000 PSI OR BETTER ACCORDING TO SPECIFICATIONS.
- * USE BETWEEN A (2" & 3") SLUMP, "DRY" CONCRETE.
4. INSERT DELINEATOR/SOCKET ASSEMBLY INTO CONCRETE SO THAT TOP OF SOCKET IS JUST ABOVE GROUND LEVEL. POSITION SOCKET IN HOLE SO THAT WEDGE AND DELINEATOR FACE ONCOMING TRAFFIC.
5. POUR CONCRETE AROUND SOCKET UNTIL IT LEVELS OFF AT TOP OF HOLE SO THAT ONLY APPROXIMATELY 3/8" OF TOP OF SOCKET IS ABOVE THE TOP OF CONCRETE.

NOTE: APPROXIMATELY 20 DELINEATORS CAN BE INSTALLED PER CUBIC YARD OF CONCRETE



H:\SHUR-TITE\INSTALL INSTRUCTIONS 7-17-07.dwg 7/16/2007 8:33:37 AM